

1953

30th Anniversary Issue

1983

T H E



J A S P I L I T E

December 1983

Affiliated with the Midwest Federation
of Mineralogical and Geological Societies

THE JASPILITE

OFFICIAL PUBLICATION
of the
ISHPEMING ROCK AND MINERAL CLUB, INC.

Published Quarterly

OFFICERS AND COMMITTEES

President	Bruce Spike, 197 Midway Drive, Negaunee 49866	226-3933
First Vice President	Jan Ruonavaara, 146 M-35, Negaunee 49866	475-7637
Second Vice President	Ingrid Bartelli, 2010 Sugar Loaf Ave., Marquette	226-3762
Secretary	James Procunier, 572 Jopling, Ishpeming 49849	485-4263
Treasurer	Arnold Mulzer, 322 Rock Street, Marquette 49855	226-2321
Liaison Officer	Michael Elliott, 632 North Fourth, Ishpeming 49849	485-6237
Exchange Bulletin Editor	Helen Johnson, 1962 West Fair Ave., Marquette 49855	228-9422
JASPILITE Editor	Helen Johnson	
JASPILITE Publisher	Ernest Johnson	
Program Chairman	Jan Ruonavaara	
Publicity, Public Image, & Courtesy Committee	Ingrid Bartelli, Olive Sain, Tony LaChance	
Membership Chairman	Ingrid Bartelli	
Finance Chairman	James Procunier	
Field Trip Chairman	Tony LaChance	
Safety Chairman	Leonard Bartelli	
Curator	C. Robert Markert	
Scholarship Committee	Laurence Sain, Frazier Tubbs, Ingrid Bartelli, Arnold Mulzer	
Hostess Chairman	Jan Ruonavaara	
Librarian	Ernest Johnson	
Hospitality Chairman	Lilly Johnson	
1983 Silent Auction Chmn.	Arnold Mulzer, Allan Korby	
1983 Swap & Sell Chmn.	James Procunier	

MEETINGS: Business Meetings: 1st Friday of the month, 7:30 p.m. at Bothwell Middle School, Marquette (1st Thursday evening June-Sept.)
 Program & Activity Meetings: 3rd Sunday of the month at 2 p.m. at the Ishpeming Senior Citizens' Center, Pine & Division Sts., Ishpeming, October through April. Field trips during the summer months.

MEMBERSHIP: The Ishpeming Rock and Mineral Club, Inc. is open to anyone interested in the earth sciences.

Initiation Fee	\$1.50
Husband & Wife Annual Dues	3.00
Adult Annual Dues	2.00
Junior Annual Dues	1.00

OUR PURPOSE

To enjoy, to learn, to teach and to conserve
 The rocks, the gems, the fossils and ores.
 To collect, to admire, to brag and to show
 The material we've found, we'll trade for yours.
 -- Bob and Marian Markert

Deadline for JASPILITE: January 1, March 1, May 1, July 1, September 1, November 1
 Material in this bulletin may be copied provided full credit is given to the author and the bulletin. Send all exchange bulletins and related items to the Exchange bulletin Editor.



ROCK and MINERAL CLUB

The officers and members of the ISHPEMING ROCK AND MINERAL CLUB, INC. are proud to present this special issue of the Jaspilite commemorating our 30th anniversary.

The editor wishes to thank all contributors to this bulletin who have helped in so many ways. Without their help, this bulletin would not have been accomplished.

This issue of the Jaspilite is dedicated to all past and current members of the Ishpeming Rock and Mineral Club whose efforts have made the club what it is. Without their concern and interest, the IRMC could not have reached the high esteem it has attained.



“Waste Not, Want Not”

by Frank G. Matthews, Sr.
Jackson Mine Museum

The world was made for man to enjoy, not for man to destroy. We travel on a one-way road in life, not to return, so why destroy our natural resources the way we do? Why not leave the beauty of our land for future generations to see?

As a boy, I traveled the hills and forests in the Upper Peninsula, gazing at the jewels that were created by God. The rocks of granite, Quartz, crystals, many kinds of “Iron ore”, pebbles in clear pure water, are a vanishing heritage that I enjoyed.

Today at three score and ten, I travel the same road only to find the destruction rampant of blasted, littered earth. To you, what is it worth?

Awaken people before it is too late and make America beautiful again.

from '72 MWF Convention Booklet

An Anniversary Message

Bruce Spike
President, IRMC

The December meeting of the Ishpeming Rock and Mineral Club marks the 30th anniversary of its conception.

Conceived as a fun thing; a get-together for exchanging knowledge, ideas and skills; held together by the framework of good fellowship and a common interest in the rocks and minerals; this club has grown from a modest beginning of twenty-six members to over one hundred.

Achievements have been many. As a member of the Midwest Federation, we donate one dollar a year for each member to the Federation Scholarship Fund. We also present worthy students of NMU and MTU with \$200 annual scholarships. We have hosted Midwest Field Trip Conventions twice and field trips for MGAGS and various other club groups from the Midwest and Canada many times. We have hosted the Upper Peninsula Rock and Mineral Shows several times.

We have received numerous awards from the Midwest and American Federations for meritorious service.

We can be justly proud of our heritage. I have also been proud to serve as your president over the past two years.

Happy anniversary to all you Rockhounds! May you have many, many more years of happy rock hunting!

Charter Members

George Bamford
Lena Bamford
Mrs. Benson
Ted Beutner
Joe Collick
Anita Davis
Robert Davis
Gust Engman
Charles Hawes
Hetty Hawes
Tom Hughes
Catherine Lemin
Champ Lemin

Paul LeSage
Bill Locher
Ero Loustari
C. Robert Markert
Dudley Markert
Marian Markert
Scott Markert
Dan Mitchell
R. K. Richards
Charles Tapola
Thelma Tapola
Lenwood Trebilcock
Lyle Trebilcock
Jim Urqhart

IRMC TRIVIA: The club's first Christmas Party was a Potluck Dinner held in December, 1953, at the National Ski Hall of Fame in Ishpeming, Michigan.

1983 Members

1953 *
 Bob & Marian Markert, Ishpeming
 Dudley Markert, Burke, Virginia
 Scott Markert, Baltimore, Maryland
 Helen Mortenson **, Largo, Florida

1957 *
 Elmer and Mamie Jarvi, Ishpeming
 Audubon Jenkins, Ishpeming

1958 *
 George & Lena Bamford, Ishpeming

1960 *
 Mrs. Pat Elie, Gwinn
 Charles Markham, Marquette
 Clemens Newman, Ishpeming
 Laurence & Olive Sain, Marquette

1964 *
 Burton Boyum, Ishpeming

1965 *
 Doris Garceau, Ishpeming

1970 *
 Carlton & Susan Gutman, Marquette
 Ernest & Helen Johnson, Marquette
 James Quayle, Ishpeming
 Lowell & Dawne Smail, Ishpeming

1971 *
 Charles & Theresa Bemis, Gwinn
 Fred Garceau, Ishpeming
 Allan Korby, Negaunee
 Frazier Tubbs, Negaunee
 Wayne & Ida Wilson, Marquette

1972 *
 Joseph & Eileen Dunham, Marquette
 Becky Helt, Marquette
 Frank Matthews, Negaunee
 Arnold & Doris Mulzer, Marquette
 George Ruuska, Marquette

1973 *
 Mrs. Albertine Bell, Marquette
 Mrs. Luella Reidy, Ishpeming

1974 *
 Leonard & Ingrid Bartelli, Marquette
 Jim & Dorothy Bowns, Negaunee
 Francis & Barbara DePetro, Marquette
 Joseph & Eleanor LaChance, Marquette

1975 *
 Leon Anderson, Little Lake
 Miss Lilly Johnson, Marquette
 Donna Markert, Baltimore, Maryland
 Joseph & Jarrett Vachon, Mesa, Arizona

1977 *
 Henry & Sylvia Belmore, Marquette
 Chris Johnson, Marquette
 Anne Markert, Burke, Virginia
 Nelson & Marion Short, Howell, Michigan
 Chester & Elizabeth Williamson, Downers
 Grove, Illinois

1978 *
 Benjamin & Marjorie Ogea, Ishpeming
 John & Lillie Schock, Willmar, Minnesota
 Bruce & Marie Spike, Negaunee
 Sharron Spike, Negaunee

1979 *
 Larry & Sally Ahrndt, Skandia
 Michael Elliott, Mulberry, Florida
 Bernie & Hazel Kaukola, Marquette
 Robert Thomas Krieg, Sarasota, Florida
 Donald & Janice Ruonavaara, Negaunee
 Arthur Wiig, Negaunee

1980 *
 Don and Dorothy Auler, Villa Park, IL
 John Brofka, Marinette, Wisconsin
 Thomas W. & Marjorie Morris, Allen Park
 James & Patricia Procunier, Ishpeming
 Robert Procunier, Ishpeming
 Annette Johnson, Marquette

1983 MEMBERS OF IRMC (continued from page 3)

1981 *

Mrs. Ruth Messier, Marquette
 Matheau & Ethel Nevala, Marquette
 Allan & Carol Veenkant, Marquette
 Tim and Pam Veenkant, Marquette
 Patrick, Bernadette, & Pat Wallace,
 Marquette

1982 *

Kenneth & Eileen Dobson, Negaunee
 Mrs. Mary Karr, Marquette
 Steve Locatis, Negaunee
 Thomas Quayle, Ishpeming
 Dorothy Tubbs, Negaunee

1983 *

Carl Beyne, Marquette
 Suzanne Elliott, Mulberry, Florida
 Steven & Diane Gladu, K I Sawyer AFB
 Dennis & Janice Mapes, Negaunee
 Brandon & Jayson Mapes, Negaunee
 Dave & Dorothy Myers, L'Anse
 James Paquette, Negaunee
 Rev. William Rogers, Ishpeming
 Mrs. Lucille Scotti, Marquette
 Joe & Marge Santangelo, Norridge, IL
 James & Connie Thatcher, Munising
 Susan Van Hulle, Taylor, Michigan

* denotes year in which member joined
 **deceased, September, 1983

Mineral Club Distributes New Booklet

... and the JASPILITE was born in December, 1954.

ISHPEMING — The "Jaspilite," a new publication by the Ishpeming Rock & Mineral club, is being distributed to many rock and mineral enthusiasts in midwest clubs.

The six-page booklet is fronted by a poem entitled "A Gold Mine," by Knute O. Holm, of Marquette, a victim of muscular dystrophy who has written many poems.

A column by the club president, Robert Davis, leads the publication, which also includes an item on Marquette Jasper, an informal story on a Copper Country field trip. An article on ore trimming was reprinted from the Mining Journal.

A story on the Midwest Federation of Mineralogical and Geological Societies, at Detroit next June, was included, along with a brief biography of club treasurer, George "Bud" Bamford, and a review of the Ishpeming Centennial.



(photo courtesy of Frazier Tubbs, Negaunee)

Our winter program meetings are often enhanced by lapidary or other rockhound hobby work-sessions.

IRMC TRIVIA: The Ishpeming Rock and Mineral Club first investigated becoming an incorporated non-profit organization in 1958 with incorporation of our club becoming a reality in 1960.

Mineral Club Holds Auction Wednesday

ISHPEMING—A mineral auction is slated for the Wednesday night meeting of the Ishpeming Rock & Mineral club, at the Ski Hall of Fame at 7:30.

Members have been asked to bring choice specimens. Anyone interested in collecting mineral specimens may attend the meeting and take part in the auction. President Bob Davis will call a short business meeting and will introduce a new club project.

Following the meeting and auction, a color film, "Lead from Mine to Metal," will be screened through the courtesy of the Bureau of Mines, United States Department of the Interior.

Films show the on-the-spot mining and transportation activities underground, as well as smelting of the mineral on the surface. The Rock & Mineral club has arranged a large display of minerals in the Ski Hall of Fame for the benefit of the public. Any outstanding specimens which may be gathering dust in attics and basements will be gratefully accepted. Prospective donors are asked to contact Davis, phone 628-W, or curator Bob Markert, phone 337 in Ishpeming, R. R. Richards in Negaunee.



Our SILENT AUCTIONS were early arrivals to our annual events as noted by this December, 1954 clipping.



The 1981 Silent Auction was enriched by the addition of mini demonstrations of micro-mounting and the making of jewelry by members of the club.

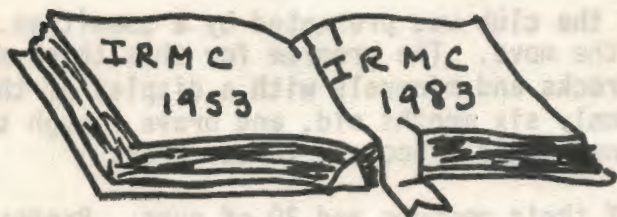
(Photos courtesy of F. Tubbs)

ELECTED OFFICERS 1953-1983

<u>YEAR</u>	<u>PRESIDENT</u>	<u>VICE-PRESIDENTS</u>	<u>SECRETARY</u>	<u>TREASURER</u>	<u>EDITOR</u>	<u>ASSOCIATE EDITOR</u>
1953	Bob Markert	George Bamford	Anita Davis	Bob Davis		
1954	Bob Davis	R. K. Richards	Bob Markert	Bud Bamford	Bob Davis	Marian Markert
1955	Bob Richards	Carl Lemin	Bob Markert	Bud Bamford		
1956	Bob Richards	Bob Schenk	Bob Markert	Bud Bamford	Marian Markert	Bob Markert & Irene Lutes
1957	Bob Richards	Bob Schenk	Ed Carlyon	Bud Bamford	Bob Markert	Marian Markert, Irene Lutes & Barbara Engstrom
1958	Ed Carlyon	Elmer Jarvi	Marian Markert	Bud Bamford	Bob Markert	Marian Markert, Irene Lutes & Carol Kokko
1959	Bob Markert	Bernard Dooley	Marian Markert	Bud Bamford	Bob Markert	Marian Markert, Irene Lutes & Carol Kokko
1960	Jari Kivela	Bob Markert	Marian Markert	Bud Bamford	Carol Kokko	Marian & Bob Markert & Taine Kokko
1961	Elmer Jarvi	Clyde Steele	Marian Markert	Lena Bamford	Carol Kokko	Marian & Bob Markert, Taine Kokko & Dominica Carlyon
1962	Al Murray	Gladys Haney	Muriel Bobko	Roy Hansen	Dominica Carlyon	Carol & Taine Kokko
1963	Glenn Gregg	Roy Hansen	Mary Edwards	Frank Bogetto	Carol Kokko	Chester Signal, Dominica Carlyon, Glenn Gregg, Al Murray
1964	Roy Hansen	Glenn Gregg	Mary Montagne	Richard Montagne	Carol Kokko	Roy Hansen, Al Murray
1965	Marian Markert	Lucian Hunt	Dave McGowan	Rufus Maynard	Roy Hansen	
1966	Lucian Hunt	Paul Newcomb Wesley Perron	Ruth Lawson	David McGowan	Bob Markert	Marian Markert
1967	Lucian Hunt	Audubon Jenkins John Jacobson	Wesley Perron	Doris Hughes	Bob Markert * Wesley Perron	Marian Markert "Jaspiliter"
1968	Bernard Smith	Audubon Jenkins John Jacobson	Wesley Perron	Doris Hughes	Clariss Smith * Wesley Perron	"Jaspiliter"
1969	Bernard Smith	Laurence Sain John Jacobson	Olive Sain	Doris Hughes	Clariss Smith * Wesley Perron	"Jaspiliter"
1970	Laurence Sain	Vernon Miljour Olive Sain	Pat Elie	Doris Hughes	Clariss Smith	
1971	Vernon Miljour	Pat Bemis	Pat Elie	Doris Hughes	Olive Sain	Laurence Sain
1972	Pat Bemis	Ernest Johnson Frazier Tubbs	Helen Johnson	Dorothy Tubbs	Olive Sain	Laurence Sain
1973	Ernest Johnson	Frazier Tubbs Carlton Gutman	Helen Johnson	Dorothy Tubbs	Olive Sain	Laurence Sain
1974	Ernest Johnson	Frazier Tubbs Carlton Gutman	Mildred Jenkins	Lyndon Fallat	Olive Sain	Laurence Sain
1975	Frazier Tubbs	Carlton Gutman Ray Boerup	Dorothy Tubbs	Arnold Mulzer	Olive Sain	Laurence Sain
1976	Carlton Gutman	Robert Phillips David Proper	Sandra Phillips	Arnold Mulzer	Olive Sain	Laurence Sain
1977	Carlton Gutman	Robert Phillips	Sandra Phillips	Arnold Mulzer	Sandra Phillips	Dorothy Tubbs, Laurence & Olive Sain
1978	Robert Phillips	Olive Sain Bruce Spike	Laurence Sain	Arnold Mulzer	Sandra Phillips	Dorothy Tubbs, Laurence & Olive Sain
1979	Robert Phillips	Olive Sain Bruce Spike	Laurence Sain	Arnold Mulzer	Helen Johnson	Dorothy Tubbs, Laurence & Olive Sain, Ernest Johnson
1980	Olive Sain	Bruce Spike Michael Elliott	Laurence Sain	Arnold Mulzer	Helen Johnson	Ernest Johnson, Dorothy Tubbs
1981	Olive Sain	Bruce Spike Michael Elliott		Arnold Mulzer	Helen Johnson	Ernest Johnson
1982	Bruce Spike	Robert Procunier Jan Ruonavaara	James Procunier	Arnold Mulzer	Helen Johnson	Ernest Johnson
1983	Bruce Spike	Jan Ruonavaara Ingrid Bartelli	James Procunier	Arnold Mulzer	Helen Johnson	Ernest Johnson

* Wesley Perron initiated the "Jaspiliter" which was published each month the "Jaspilite" was not.

IRMC TRIVIA: At Twin Lakes Campground, Don Ruonavaara showed his strength by pulling out a post so Sains could park their trailer without banging up a fender. He just wrapped his arms around it and lifted. He surprised himself!



The First 30 Years

by Bob Markert

This effort of bringing our history into focus is being dedicated to those pioneers who back in 1953 organized and became members of one of the most energetic clubs in America.

The accomplishments of this club are many and the dedication of its members year after year stands as testimony to the "caliber" of the men and women who comprise the membership.

THE VERY BEGINNING

Friends of rock collecting, I shall try to tell you a little about this wonderful rock and mineral club -- where it got its start -- how it managed to keep going -- and something about some of the "characters" who operated during that era over a decade ago.

It seems a lot longer than 30 years; but somehow the figures don't lie. Back in 1952 or maybe the year before, some interesting talk began among three or four persons who were destined to get together on the common grounds of mineral collecting. We all seemed to be aware of one super collection which existed in the Ishpeming area and ... our mediocre collections became important parts of our spare time from that year on. Soon other interested people surfaced in this rock-hound picture...None of us would have gotten to first base if our spouses weren't understanding and willing to testify to townspeople that we hadn't lost all of our marbles and we were in reality quite harmless.

The hot and heavy talk back there in 1952 bore fruit as it fell on "small ears". Even before our beginning, a rock club was formed in Ishpeming. I know because the tree house and all the branches of the big maple tree outside our kitchen window bore budding pebble pups. The juniors beat us to it!

In the fall (date unknown) of 1952, seven or eight pebble pups formed the first Ishpeming Rock and Mineral Club. After the business of starting the club was taken care of, the "pups" shimmied down the tree, came in and asked their "pup mummy" to take them out on their first official rock hunt to the Ropes Gold Mine.

We older collectors didn't get our act together until January of 1953. On January 28, 1953, approximately 20 to 30 interested persons braved a cold winter evening to get together at the Ishpeming Winter Sports Clubhouse under the guise of organizing a mineral club. It might interest you to know the name chosen that night was to be temporary and called The Ishpeming Rock and Mineral Club. A by-laws committee was appointed, officers were elected, and dues set at \$1.00 for adults and 50¢ for juniors. It is interesting to note that the name of the rock club which was chosen at the first meeting of the club carried over to the second meeting held in February, 1953; and it is still going strong.

(Continued on page 8)

THE FIRST 30 YEARS (continued from page 7)

In February, 1953, the first by-laws of the club was presented by a committee. By March 24, 1953, our treasury was on the move. The program for this third meeting of the club was a slide program on rocks and minerals with a display of those minerals. In June, 1953, the club was only six months old, and brave enough to sponsor a field trip by the Michigan Mineralogical Society to our area.

The MMS Field Trip was attended by 65 of their members and 20 of ours. Professor McIntosh of Michigan Tech graciously came down here and assisted us with the trips. We collected at Jasper Knob, Sellwood Pit, New York Pit, Champion Mine, Verdi Antique Quarry, Ropes and Michigan Gold Mines.

By October we were remembering the good old days when we were flush ... but we weren't dismayed as we started to talk about creating a mineral display in the National Ski Hall of Fame. It was at this October meeting that we send out several letters asking for donations of minerals. By November, we had already started to receive some donations of minerals for the Ski Museum display.

In November, 1953, we were faced with the fact that it was going to take money to keep this active club going.

During the first year of organization, we met in private homes, the Winter Sports Clubhouse, the Firehall, the Ishpeming Library and the Ski Museum and on the banks of the Sturgeon River.

Our dues were officially raised from \$1.00 to \$2.00 for adults and junior dues were raised to \$1.00 from 50¢.

A bake sale took in \$33.43 on December 10, 1953.

Our display (at the Ski Museum) got off to a big start with mineral donations from the Marquette Historical Society, Calumet & Hecla, Michigan Tech and the Smithsonian Institute.

We officially joined the Midwest Federation on December 10, 1953.

THE EARLY YEARS

Rotating school displays were suggested, put together and circulated among several Marquette County schools. By March, 1954 ... another bake sale ... another auction. Excellent programs of 1954 were talks on "diamonds", "Marquette Range Geology", "Asbestos", "Pseudomorphs", "Sulphur", "Isle Royale" and lapidary demonstrations. Another project of the club was making and selling mineral cards and egg cartons of minerals. In October, 1954, the Jaspilite got its start. The first issue was published in December, 1954.

The first Ishpeming Rock and Mineral Club display to be shown in a Midwest Federation Convention was in Detroit. Another special auction of minerals donated to the club was held in October, 1955. On January 26, 1956, the membership voted to reduce the dues to \$1.00 for senior members and to 50¢ for juniors.

The design for the cover of the Jaspilite was copied from the Centennial Seal of Ishpeming. The "Rockin' Around" column had its start through a contest to name the column.

(Continued on page 9)

THE FIRST 30 YEARS (continued from page 8)

The club started out with about 27 members from Ishpeming, Negaunee and Princeson, Michigan; and by 1958 the membership had grown to 101 members from Ishpeming, Negaunee, Marquette, Republic, Michigan, Iron River, Crystal Falls, Stambaugh, Houghton, Iron Mountain, Memonimee, ten from lower Michigan, two from Wisconsin, two from Illinois, one from Iowa, two from West Virginia, two from Idaho and one from Maine.

Our 1958 Midwest Club Display was taken to Downers Grove where we won a prize in the Educational Division. Mike Dooley and Dudley Markert won prizes for their junior displays.

A first for the club -- a gem show on June 25-26 at the Ski Hall of Fame. In the year 1959, with 200 persons visiting our gem show at the Ski Museum and paying admissions and the sale and rental of cases, it grossed the club \$369.30. It was a nice show and it completely filled the second floor of the Ski Museum. Besides several excellent personal displays, live demonstrations of lapidary and micro mounting took place. The show lasted three days instead of two and was considered to be a success.

Springfield, Ohio, was the site of the Midwest Federation Convention; and Ishpeming provided a display for that PLUS furnished the material for the Michigan and Minnesota displays in the Parade of States Exhibition.

OUR FIRST MWF CONVENTION

1960 was a very busy year...dates were July 1 to 4 with special days on June 30 and July 5. Special souvenirs were from a sunken ship in Munising Bay. Bar-B-Q by 4-H (club), Boulder Buster Banquet, Silent Auction, Barber Shop Sing, Drum & Bugle Corps, Talks, Demonstration on Silver Smithing (and, of course, field trips). By June 27, 1960, 620 persons had registered; and by the time the convention was over, in excess of 800 had participated.

OUR INTERIM YEARS

Three honorary life members were named in 1960; and they were: Burton Boyum, Jack Bowen and Kiril Spiroff.

In 1961, a tremendous project was undertaken. An attempt was made by our club members to start a mining museum in Marquette County. We had our eyes on the abandoned Engine House of the Cambria Mine overlooking Teal Lake. An extended field trip around Lake Superior took place June 17-24 of this year. This was the first year of club involvement with the NMU Science Fair.

In 1962 -- another big project -- drapes for the Ski Museum -- made by the women of the club. Constructed a beautiful club display for National Show in Des Moines, Iowa. Display had the second highest rating in the National Federation that year and rated #1 in showmanship and educational. Jaspilite contest won by Al Murray for his article "The Beauty is Hidden Inside".

About the Mining Museum -- we were asked if we would move our mineral display and cases to the Mather Mine A Office where a mining museum was being proposed. We set up window displays during Michigan Week in Ishpeming, Negaunee and Marquette. Several months of planning ensued on the mining museum .. the plans were changed.

(Continued on page 10)

THE FIRST 30 YEARS (continued from page 9)

During the year 1964, we exchanged 100 pounds of rock with the Muskegon Rock Club for auction. Silver Smith class was held at NMU with about ten members participating. We gave the same support to the NMU Science Fair. We almost lost our oil paintings to the Chamber of Commerce; but our demands prevailed and we became sole owners. Nine youths won prizes in the (Marquette County) Harvest Festival held in the Ishpeming Armory.

The Ishpeming Rock and Mineral Club elected their first woman president in 1965. Support for the NMU Science Fair was given. Second gem and mineral show to be held during Firemen's Convention during the first week of August was at St. John's School. Education-Rotating displays were set up in the schools in North Lake, Ishpeming, West Ishpeming, Negaunee, Marquette and Gwinn.

This year, 1966, the club scored a first with two vice presidents elected to office. Continued support of NMU Science Fair was given. The educational displays with oil paintings background kept the club members busy rotating them in the schools.

1967 brought a first for the club -- the "Jaspiliter" was born and to be published months the Jaspilite wasn't. We lost the Ski Hall of Fame as a meeting place and a repository for our collection. We moved all the display in May to the Ishpeming Chamber of Commerce. Outstanding field trips for the year were to the Groveland Mine and the Copper Country.

The gem show in 1968 was a success. It was the first annual U. P. Gem and Mineral Show and our 15th anniversary.

An attempt was made to name Hematite the state mineral and chlorastrolite the state gem.

The first 100% MWF Scholarship Award was received by the club in 1969. We participated in the second annual U. P. Gem Show in Calumet with displays. Educational displays were still popular including two at NMU.

In 1970 the IRMC displayed at the Green Bay Show. Junior member activities were increased this year (1971). Members assisted Marquette County Historical Society set up a Michigan Display of minerals (1972). Educational displays spread to Republic this year.

THE 72 MWF CONVENTION

Priority was given this year to the (MWF) Field Trip Convention. The Ishpeming Armory was the site ... All field trips were by bus with two guides per bus ... Camping at Ishpeming Playgrounds ... 5th Annual U. P. Gem Show was held in conjunction with convention ... Banquet was held at NMU ... Pancake Breakfast ... MWF Board Meeting held poolside ... This was considered a successful but the LAST field trip convention of the MWF.

THE PAST DECADE

Several clubs were hosted by ours on field trips this year (1973). Live demonstrations of lapidary existed at most club meetings in 1974. Our club held a successful rock swap in the Marquette Tourist Park. 124 rockhounds from eight states attended the swap, auction, field trips and crackerbarrel sessions.

(continued on page 11)

THE FIRST 30 YEARS (continued from page 10)

The first micro mounter group organized this year (1975). Considerable work was done on our Ishpeming Chamber of Commerce mineral display. Plans were made to clean up Jasper Knob.

1976 was a busy year! The 9th Annual U. P. Gem Show was held in Lakeview Arena on August 6, 7 and 8 (10 dealers, Silent Auction, Treasure Trove, Touch Stones, Rock Swap, Special Displays and all of the club oil paintings used in displays.) The Bicentennial Theme included red, white and blue vests.

A local scholarship fund was started in addition to the MWF Scholarship.

The micro group met twice a month in 1977. The February silent auction netted \$192.20 for scholarship funds. Successful rock swap and auction held in August. The Marquette Chamber of Commerce mineral display was updated.

Activity and talk begins (in 1978) on a possible Carp River Forge Mining Museum. Many fine field trips held this year. The rock swap, silent auction, raffle and crackerbarrel sessions were very successful.

On August 11 and 12, 1979, the 11th Annual U. P. Gem Show was held in the Ishpeming Armory. There were 8 dealers, 3 demonstrations, treasure trove, rock swap, silent auction and field trips. Jasper Knob was cleaned up by club members on October 2, 1979. We became a 1000% member of the Midwest Scholarship Program.

In 1980 we became a 1100% club in the MWF Scholarship Program. The August rock swap, silent auction, raffle and crackerbarrel sessions netted \$228.02. We moved our display (from the Ishpeming Chamber of Commerce) into storage in the CCI storage sheds.

The Markerts were awarded a life membership in the IRMC (1981) and Olive Sain was awarded a Midwest Federation award for her article on Slate Carving.

In 1982, two former longtime members rejoined the club ... Rock Swap in August... Club became a 1300% club in the MWF Scholarship Fund.

NOW

History is in the making during 1983. Roll up your sleeves and become a part of it.

(Editor's Note: "The First 30 Years" is condensed from Bob Markert's article published in the March, May and July, 1983, issues of the Jaspilite.)

You like rocks, you know the names of a few local specimens, but you really don't know anything for scientific sure. You pick them up, put them on your shelves and admire them, mostly as reminders of past picnics. But not as characteristic or as uncharacteristic specimens of their geologic genera. THAT'S BEING A ROCKHOUND ...

Abby Beecher Roberts
March, 1957, Jaspilite



ISHPEMING, MICHIGAN—Two views of rockhounds on a mineral hunting spree on top of Jasper Knob. Specimens were plentiful and picture snappers had field day as guide-rock shop owner Bob Markert (tall man standing) extolled vacation benefits of Marquette County area. (8/28/68)

Minerals of Upper Michigan Mineral Club

Sells Unique Souvenirs



Prepared by

ISHPEMING ROCK & MINERAL CLUB

"Fund-raisers" were an early necessity of a fledging rock and mineral club.

4H Jaspilites

"Well, the 4-H Mineral Club is organized and running smoothly with 11 boys and girls, 1 leader and 2 advisors. The application for membership had to be closed until such time as more leaders can be obtained. We think this is the first of its kind to be organized in the U. S. As their name they chose "4-H JASPILITES".

"They are 'hardy little souls' in as much as they went on a field trip to the Beacon Mine in the dead of winter, but were well rewarded with specimens of tourmaline, siderite, magnetite, micaceous iron ore, sericite and garnets." (from March, 1957, Jaspilite)

It should be noted that Marquette County, and indeed the State of Michigan, based their guidelines for rock and mineral 4-H groups on this early spin-off of our club.

irmc trivia

Bud Bamford conducted the first lapidary class in the Ishpeming High School in the 1950's.

There were 37 field guides for the 1960 MWF convention, no less. Their theme was: "Lake Superior District where all the known minerals are found and half the rest."

April and May, 1963, marked the first and second meetings of the newly formed lapidary unit within the IRMC. Because of the increased interest shown along these channels, it was considered a necessary course of action, and certainly a step in the proper direction ...

Do you remember how the large sign was painted for our first rock swap in 1974; and how it mysteriously disappeared late that afternoon -- only to magically reappear the following year -- posted at the entrance to the Tourist Park where our rock swaps were then held?

There was that piece of gold (in matrix) on the Silent Auction table at the 72 MWF Convention that no one seem to want to bid on -- and someone finally did.

We may have been the first rock club to utilize a mainframe computer for registrations, bus routes, tickets, etc., for a convention.

ISHPEMING — The Ishpeming Rock and Mineral club has come up with a unique souvenir, typical of the area, in the mineral cards they have put on sale for nominal sums in local stores.

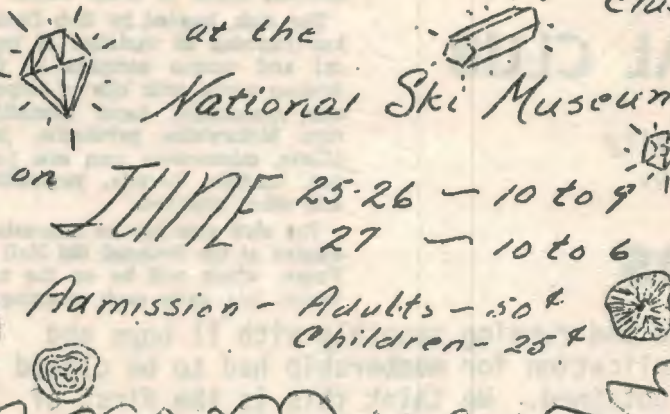
The club, headed by Bob Davis, has included 20 varieties of typical and unique samples in the various cards, with bits of serpentine, specularite, hard hematite, rare Mohawkite, pyrolusite, jaspilite, micaceous iron ore, jasper, martite, bornite, pegmatite, and other attached.

The club also has an interesting display at the National Ski Hall of Fame, which will be on the historical bus tours each morning.

Firemen's Tournament Highlight:

Lapidary, Silversmith Demonstrations Set For 'Treasureama'

First Annual
Gem & Mineral Show
of the Ishpeming Rock & Mineral Club
at the National Ski Museum
 on **JUNE 25-26 - 10 to 9**
27 - 10 to 6
 Admission - Adults - 50¢
 Children - 25¢



ISHPEMING — Lapidary and silversmithing demonstrations, slide programs, mineral and gemstone exhibits, historical and educational displays will be featured in the Ishpeming Rock & Mineral Club's gem and mineral show Thursday, Friday and Saturday. It is one highlight of the Upper Peninsula Firemen's Tournament.

The show is being held in St. John's School on S. Pine St. from 10 a.m. until 9 p.m. Thursday and Friday, and on Saturday from 10 a.m. until 6 p.m.

Featured in the "Treasureama" will be an heirloom collection of jewelry. Many of the items in this collection, which will be displayed by Mrs. A. B. Roberts of Deertrack, were obtained by the mother of John M. Longyear before the turn of the century.

3,000 Years Old

Two Cartouche rings date back 3,000 years and were found in Egyptian tombs. Both rings are of turquoise and were seals of authority of a dynasty centuries old.

This exhibit of priceless jewelry includes turquoise in many interesting designs, such as an Arabian necklace on a delicately wrought silver chain; a necklace of carved turquoise and coral from China; a large silver and turquoise cross (relica of the old Vargas Cross), which was made by the Indians of Arizona; and an old Santa Domingo silver necklace set off with rough turquoise in its natural state.

Present-day jewelry is represented by turquoise necklaces worked by the Indians of Arizona.

Jade of various colors and design also may be seen. One such item will be earrings and a brooch made in Mexico.

Outstanding among the jade items is an apple-green, hand-carved necklace, bracelet, brooch, earrings and rings, carved by the Chinese. The intricate designs of this group

must have taken countless days to fashion, since even the fingerstone or "figgitstone", according to club members, was painstakingly fashioned in jade.

Chairman Lists Gemstones

The chairman of the Treasureama, Elmer Jarvi, stated that other gemstones to be featured in necklaces, brooches, pendants, bracelets and rings are Mexican opal bloodstone and moonstone from India; citrine and amethyst from Brazil; coral from Italy; beryl and pearls from China; items of petrified wood, agate, thomsonite, chlorastrolites, chalcedony and jasper from the United States.

Emeralds, diamonds, citrine, amethyst, tourmaline, sapphires and rubies will represent the precious gems and will be set in platinum, gold and silver.

Bracelets and pendants made of chlorastrolites and Thomsonites found by J. M. Longyear will round out the display contributed by Mrs. Roberts.

Stone-Cutting

Jarl Kivela, lapidary chairman for the Ishpeming Rock & Mineral Club, announced that several members of the club will demonstrate the various steps taken in creating the gem cuts found in jewelry items.

Demonstrations will include the cutting of the rough stone with diamond wheels, grinding, shaping, sanding and polishing on a variety of machines.

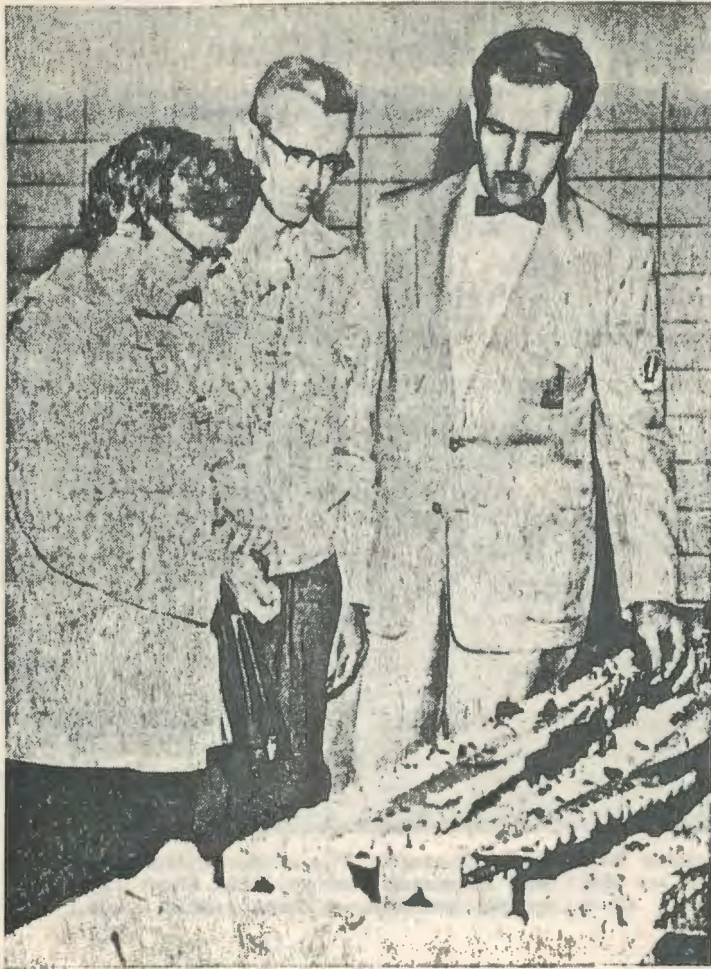
The lapidary group, with Kivela in charge, will also demonstrate and explain the art of silversmithing.

Special displays by members will include cabachons, free form and faceted stones, as well as one display of hearts and crosses.

Three gemstone tables created, fashioned and made by Clem Newman of agate, thomsonite, epidote, kona dolomite, jaspilite, datolite, jasper, hematite and various other gemstones found throughout America, will be one of the main features of the show.

The first annual show of the Ishpeming Club Is now being worked on by many a dub. Experience we have not, but fun is in store For all who've been planning and pushing this chore. From the 25th to the Seventh in the month of June We'll be assembling enough cases to fill a big room. And to make sure there'll be people there to view, The work of the novice and the professional or two Carol Kokko's talent is seen asking for help And attendance to glean. We hope that our coffers will split at the seam And this, our first show, will fulfill all our dream.

--Bob & Marian Markert
 1959 Jaspilite



Discussing convention business and looking over rock displays in the Birchview School this morning were (left to right) Robert Markert, Ishpeming, president of the Midwest federation, and Mr. and Mrs. Harry Sprague, Saginaw. Sprague is vice president.

Rockhounds Registering In Ishpeming

ISHPEMING — Rockhounds wasted no time this morning in registering at the Birchview School for the annual field trip convention of the Midwest Federation of Mineralogical and Geological Societies.

Over 100 persons had registered up to noon today and R. K. Richards, Negaunee, registration chairman, said the pace was increasing every hour. About 800 persons are expected at the convention.

The rock collectors are using almost every conceivable means of lodging for the convention, reports Mrs. Elmer Jarvi, housing chairman.

Rocks, Rocks Everywhere

Rock collectors going to register will even find rocks in the registration room at the school. Many rock specimens are on sale at bargain prices and a small "Rockhound's Dream" rockpile dots one corner of the room for the indoor rock hunters.

Registering rockhounds also are picking up souvenirs of high grade magnetite ore salvaged recently by the Marquette Skindiver's Club from the sunken ship "Drednaught" in Munising Bay.

Midwest Federation President Robert Market of Ishpeming today advised the conventioners that field trips will begin tomorrow promptly at 8 p.m. A special briefing session for the rockhounds will be held tonight at the Winter Sports Area near the Birchview School.

1960 M W F C o n v e n t i o n



Among the first to register for the 20th annual convention of the Midwest Federation of Geological and Mineralogical Societies in Ishpeming were Mr. and Mrs. James Fraser of Hart, Mich., and Yuma, Ariz. (seated, right). Assisting with registrations in the Birchview School are (left to right) Miss Betty Rogers, Mrs. George Bamford, Mrs. Robert Markert, Registration Chairman R. K. Richards and Mrs. Charles Krebs.—(Mining Journal photo.)

New Officers Of Rock, Mineral Club



Newly elected officers of the Ishpeming Rock and Mineral Club (above, left to right) are Mrs. Lena Bamford, Ishpeming, treasurer, and Elmer Jarvi, Ishpeming, president.—(Mining Journal photo.)

In 1961 there was a big push to get a rock and mineral and mining museum; but the plans for a location fell through. We know the idea is very much alive in the area -- this time the hurdle is finances.

This year the ambitious field trip around Lake Superior was set for June. A lot of work by club members was done for the planning.

For October, a field trip was planned to "bop agates" from rock a short distance past Fort Wilkins. Our kids could not go due to school work. Marquette County had a wet snowfall -- may wife and I want anyway. We waited at Fort Wilkins from 9 to 10 a.m. -- no one else came. A lesson was learned from this -- find out for sure before leaving for a distant trip if others are coming. There was no snow in the Copper Country so we "bopped agates" from the ledge. The area was nicely protected from the cold wind.

We have enjoyed the rock hobby and the good companionship of the members. Have started to wonder what we are going to do with all the rocks.

-- Elmer Jarvi

IRMC TRIVIA: Did you see the sign at the west campground of Fort Wilkins? It reads: "That great American Patriot and first signer of the Declaration of Independence, George Washington".

In 1981, IRMC published a membership brochure explaining who we are; what we do; when our meetings, programs and field trips are; and what we offer to prospective members of our club.

"There are now seven rock clubs in the U.P. with over 300 members, and there are many other rock hobbyists who are not members. Our hobby is expanding in the U. P., as it is elsewhere. Some clubs in the U.P. have had gem and mineral shows, rock swaps, and conventions. The benefits of gem and mineral shows include delight and friends. We can get more rocks and information in to ordinary activity. More shows are being planned. These continue, but few of us can attend all of them. A large gathering good for all the hobbyists and clubs in the U.P....The 8th annual U.P. Gem and Mineral Show be held, and that is by year. The IRMC is planning a show in '68 and have previous. The Bay de Noc Club suggests that the IRMC be the U.P. GEM AND MINERAL SHOW.....

Six Peninsula Clubs To Take Part In Gem, Mineral Show In July

With the above suggestion, IRMC's third gem show became the FIRST ANNUAL U. P. GEM SHOW ...

IRMC hosted the fifth annual in 1972, 9th annual in 1976 and the 11th annual in 1979 as well.

ISHPEMING — The Ishpeming Rock and Mineral Club, Inc., reports plans are progressing for its Gem and Mineral Show to be held in St. John's School July 25-27.

Because of interest shown by other mineral clubs, the Ishpeming organization has agreed to make this a combined show of all Upper Peninsula clubs, Robert Markert, general chairman, announced today.

Participating with the Ishpeming club will be Bay de Noc Gem & Mineral Club of Escanaba, Baraga County Rock & Mineral Club, Copper Country Rock & Mineral Club, Pictured Rocks Gem & Mineral Club,

Range Rock & Mineral Club of Ironwood and the Wakefield Rock & Mineral Club.

One of the main features will be a special educational display, showing handcrafted jewelry items worth thousands of dollars.

Other activity during the three-day exhibition will include slide programs provided by the Midwest Federation of Mineralogical & Geological Societies; demonstrations in lapidary and silversmithing; a special field trip Friday morning for Rockhounds and families, and a post-gem show rock swap on Sunday.

It is expected that some 300 to 400 persons will be attracted to this area because of the show, through publicity on a national level and in leading rockhound magazines, plus 10,000 advance bulletins sent to clubs and other interested media. Inquiries already are being received from outside the Upper Peninsula.

Besides Markert, the steering committee consists of Bernard Smith, club president; Elmer Jarvi and Jari Kivela.



Our rock swaps began in 1974 and were first held at the Tourist Park in Marquette. The above depicts the crowd at the 1980 Rock Swap. In addition to the swap, we have a silent auction, door prizes, raffle and crackerbarrel. (photo-F. Tubbs)



Ribbon-cutting Ceremony at the Ishpeming Armory, site of the 72 MWF Convention, on July 20, 1972.

Pictured are "Miss Ishpeming", Laurence Sain and others from the Midwest Federation. (photo-F. Tubbs)

Throughout the early years of the IRMC, traveling club displays were in use in Ishpeming, Negaunee, Republic and Gwinn. While our club no longer has traveling school displays, the IRMC has remained active in the schools when called upon as evidenced by these pictures ...



Rockhound paradise

Journal photo by Tom Buchner

Members of the Ishpeming Rock and Mineral Club have found a unique way to interest area schoolchildren in geology. Fourth and fifth grade students at Sandy Knoll Elementary School in Marquette each were given a dozen rocks in an egg carton. Shown here, students match their specimens with rocks in a larger display at the school. Pictured from left are Olive Sain, club president; Kevin Hayes and Elizabeth Grenke, fifth graders; and Sally Ahmadi, project chairman.

In addition to assisting schools, the IRMC does or has maintained displays at the Marquette and Ishpeming Chamber of Commerce and has assisted the Marquette County Historical Society to set up a permanent display of Michigan minerals.

education

George Bell, IRMC member, as an individual and on behalf of the IRMC, donated a rock saw to the Bothwell Middle School lapidary class.

The IRMC has assisted this class with material, equipment, etc., as a thank-you gesture for holding our business meetings there. (photo - F. Tubbs)



On March 19, 1978, Laurence Sain, on behalf of the IRMC, presented the first "local" scholarship to Jessie Luttenton, senior at NMU, who was planning to do advanced study in geology.

Local scholarships have been presented each year to NMU and/or MTU students. Monies to fund our local scholarships come from our Silent Auction, mini auctions, etc. (photo - F. Tubbs)



MWF Scholarship

It is interesting to note that rock auctions were considered in this first meeting of the club and they have been an important function ever since. Proceeds from the first auction were used to affiliate with the MWF and they are now being turned over to the same organization to be used in the scholarship fund.

The Ishpeming Rock & Mineral Club attained 100% participation in the MWF Scholarship Fund in 1969. We have been able to increase this figure by 100% each ensuing year through 1982, when we became a 1300% club.

We then jumped 200% to achieve a 1500% CLUB IN 1983.

(72 Convention Booklet)



Recognition is Extended to

Ishpeming Rock and Mineral Club

FOR PARTICIPATION IN

All American Federation Club Award

1981

[Signature]
Federation President
[Signature]
Club Member

[Signature]
A.F.M.S. President
[Signature]
A.F.M.S. Education Chairman

The Ishpeming Rock and Mineral Club is very proud to call its own not one, but TWO, All American Federation Club Awards.

The first award, submitted under the able direction of Dorothy Tubbs, was granted to the IRMC for the year 1979.

The second award, under the direction of Olive Sain, is pictured above and is for the year 1981.

IRMC trivia

How about the "swan" made of nylon net and confiscated from a dump that was put on the top of Ruonavaara's truck as a hood ornament. When last seen, it was nesting on top of the fuel tanks of Bartelli's camper.

How many of you are familiar with the effort of the club in conjunction with the Ishpeming Chamber of Commerce to establish a mining and mineral museum in the Mather A Office building? It was to be called The House of Mining Treasures.

And then there's Bruce Spike's "quarter mile" jaunts on the field trips he leads; that is, a quarter of a mile -- until you walk it ...

Ask Bartelli how he got an addition to his bumper and didn't see it for quite a while.

True rockhounding in Marquette County began many years before the formation of the Ishpeming Rock & Mineral Club in January of 1953. The deep seated underground iron ore mines of the Marquette Range were constantly uncovering numerous beautiful iron ore and related specimens during their early years of existence. These specimens were collected by miners who made room in lunch buckets that probably on some occasions were filled with aromatic Cornish pasties. Seems only right that on the return trip to surface a beautiful specimen would occupy the dinner bucket space vacated by that delicious pasty.

Because of the collections assembled by those early miners, shift bosses, and mining captains, interest mounted and it was only a matter of time before some of the people who were exposed to these unusual collections would band together in the form of a club.

(72 Convention Booklet)



Members of the club collecting at Lindberg's Quarry, Negaunee Township on Route 480, for Kona Dolomite.



Another view of Lindberg's Quarry

In order to assure you a quantity of kona dolomite, forty members of the Ishpeming Rock and Mineral Club spent Sunday, June 25, collecting 18,000 pounds of kona dolomite just ahead of the steam shovel and trucks of the quarry. We were afraid that the supply would run out by convention time.

(72 Convention Booklet)

Mention the word FIELD TRIP to an IRMC member -- and what you get is a CROWD! The pictures on the following pages prove out that, when there is a field trip - no matter if planned or impromptu - there's bound to be a lot of activity -- and good fellowship -- and some prize specimens!

Annual Memorial Day Field Trip

1979





Our annual Labor Day Field Trips to the Copper Country have proved to be very popular with visiting MWF clubs. Pictured are a happy group at the Minesota Mine in 1980. (photo - F. Tubbs)



The same trip found these members of the IRMC diligently looking for that prize specimen "a little deeper down".

All decked out and raring to go ... They wanted to know what was inside in 1981!



December, 1983
Anniversary Issue

THE JASPILITE
Ishpeming Rock and Mineral Club, Inc.

Helen Johnson, Editor
1962 West Fair Avenue
Marquette, MI 49855

POSTAGE DUE 7

FIRST CLASS POSTAGE



Concrete Sculpture in
Menominee County - 1981
Field Trip

TO:

PAID
 Mr. and Mrs. C. R. Markert
 122 C Street Carlyn Est.
 5611 Bayshore Road
 Palmetto, FL 33561