

JAN 57

THE



J A S P I L I T E

January 15, 1957

OFFICIAL PUBLICATION
of the
ISHPEMING ROCK AND MINERAL CLUB

affiliated
with

MIDWEST FEDERATION OF MINERALOGICAL & GEOLOGICAL SOCIETIES

PUBLISHED QUARTERLY

OFFICERS

PRESIDENT

R.K.Richards
522 Iron St.
Negaunee, Mich.

VICE PRESIDENT

Robert Schenk
Route 1
Republic, Mich.

SECRETARY

C.R.Markert
107 W. Ridge St.
Ishpeming, Mich.

TREASURER

George Bamford
437 W. Empire St.
Ishpeming, Mich.

LIBRARIAN

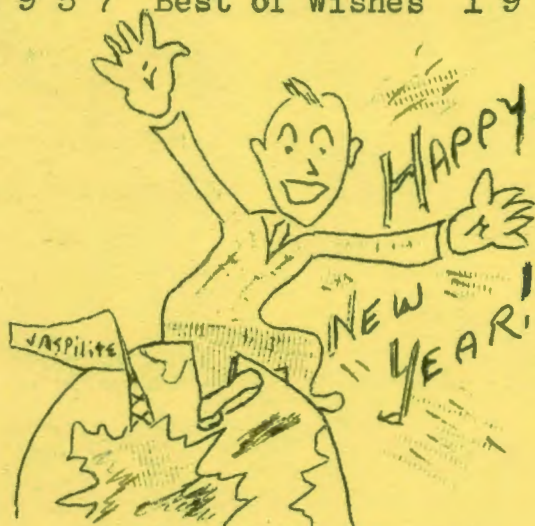
William Locher
West Ishpeming
Michigan

EDITORS

C.R.Markert
Marian Markert
Irene Krebs

LIAISON OFFICER---R.K.Richards---522 Iron St. Negaunee, Michigan

1 9 5 7 Best of Wishes 1 9 5 7



To the many rock clubs that have sent us their Christmas greetings through the columns of their bulletins, we wish to extend our appreciation. It seems particularly pleasurable, during this season of goodwill toward men, to receive greetings from folks we have never had the pleasure of meeting, but with whom we have a feeling of kinship and good companionship because we know we'd enjoy their acquaintance if and when it ever could become a reality.

We want to thank the members of our club who have contributed to the year's issues of the Jaspilite. We hope that you experience the adventure of becoming increasingly interested, as the issues become reality, and are read along with those of other clubs like ours. Though rock clubs may be scattered afar, our thoughts can span the miles with ease, and we can communicate relative to the many facets of our fine hobby.

So, whether we've been introduced or not,-it doesn't matter--we send our best wishes for the good things of life in 1957.

R.K.R.

PRE-CAMBRIAN ANTHRACITE COAL at
Iron River, Mich.

During the summer of 1952 Dr. L.P. Barrett of Ishpeming, former chief geologist for the Jones and Laughlin Co. and now consultant to the Atomic Energy Commission and his associate made a discovery that created a tremendous geological interest in the Iron River area.

While on a routine exploration for the A.E.C. near the old Victor De Mongo farm five miles north of Iron River, Mich. they came upon an old iron ore test pit which had been dug many years before. Near the pit were several lumps of what appeared to be coal, which were at first thought to be coal which had been brought in to stoke the fires of the men who had dug the test pit. Closer examination of the pit and refuse pile led the men to believe that the coal may have come from the test pit itself. Desiring to examine the site more thoroughly Dr. Barrett attempted to get the A.E.C. to conduct an investigation but was unsuccessful.

It was not until September of 1954 that anything more was done about the coal deposit. At this time the American Geological Soc. granted \$2,000 for a more thorough investigation of the coal believed to come from a seam in pre-cambrian rocks. An expedition headed by Professor Stanley Tyler, head of the University of Wis. Geology Dept. and including Dr. Barrett of the A.E.C. Oliver Seymour, Geologist for the M.A. Hanna Co., Dr. Edso S. Barghoorn, Harvard University Paleo-botanist, and staff members of the United States Geological Survey party in the Iron River district, and several other geologists whose names are unknown, was made to the site. A bulldozer was hired and an extensive excavation was made. It should be made clear at this time that the exploration was solely for the purpose of finding a commercial deposit of coal. The preliminary examination of the anthracite had

proved it to be of absolutely no merchantable value.

After 12 feet of overburden had been removed and the anthracite seam was exposed, it was found to be about ten feet wide and inclined to about eighteen feet below the surface at the opposite end of the excavation.

The discovery, from the standpoint of iron ore-hunting geologists was described by A.E. Walder, chief geologist for the M.A. Hanna Co., as "purely academic". But from the standpoint of the geological scientist and from that of the coal chemist, the proving of an anthracite seam in pre-cambrian rocks is significant. Dr. Barghoorn lists three reasons why the find is important.

1. It is the oldest coal ever found.
2. It is the oldest evidence of extensive life at an extremely remote time, dating back from one to one and a half billion years, whereas the oldest fossils heretofore known are dated 500 million years old.
3. It is the first proof that coal is not necessarily derived from woody plant remains. This point is especially interesting to coal chemists. (Preliminary studies show that it was probably formed by algae).

In three days of work the project actually "mined" about two tons of the anthracite. The excavation was then filled and leveled by bulldozer, leaving only a small clearing in the Ottawa National Forest as evidence of the archiac mineral lying below.

BERNARD DOOLEY

H.R. STRAIGHT

The Central Iowa Mineral Society and the Societies of the Midwest Federation shall long pay its tributes to our very well known and beloved member, H.R. Straight.

Our deepest sympathy is extended to Mrs. Straight and her family at this time of bereavement.

Hal was very well known and loved by many of the members of our club as well as every club in the "Mid-West", and no reader of convention news could have missed hearing or reading about Hal.

At the first convention that we attended in Milwaukee, we heard so much about Hal that we became determined to make his acquaintance. This was renewed at Detroit and some nice long visits with him in St. Paul. This friendship was again renewed on Hal's visit to Ishpeming with Charles and Hettie Hawes.

At that time it was our privilege to conduct Hal on a sight-seeing trip over some of our most scenic countryside. Hal was very much impressed with the view of our colored woodland as seen from on top of signal hill. During the afternoon of the same day he enjoyed collecting with Champ Lemin, of our club.

Hal enjoyed himself during his stay here with his very close friends, the Hawes, who have visited at the Straight home on many occasions. We have heard the Hawes mention, so many times, of the wonderful collection of gems and minerals that Hal had amassed, to become one of the best collections in the Midwest.

In Mr. Straights passing we have lost a very wonderful friend, however, his kindness, helpfulness, and friendliness shall long be remembered.

Bob Markert

OUR MINERALS cont. from last issue

Bob Schenk

My subject in this issue will be Goethite, which is a form of Bog Ore. It's Crystallography is Orthorhombic. Depyramidal rarely found in distinct prismatic, vertically striated crystals. Specific gravity is 4.37, hardness 5-5½, color runs from yellowish brown to dark brown, and the streak is yellowish brown.

Goethite has perfect cleavage parallel to brachypinacoid. It can be told chiefly by its color streak and distinguished from limonite by its cleavage and radial growth. Goethite is one of the commonest minerals and is typically formed under oxidizing conditions as a weathering product of iron bearing minerals.

In the Ishpeming-Negaunee area some very nice specimens have been found. Notably at the Lloyd and Morris mines northwest of Ish. Old stockpiles around National Mine and the Phoenix pits in north Champion offer some nice stalactitic Goethite.

NORTHERN MICHIGAN HAS PLENTY OF CORAL

Northern Michigan, hardly noted for the sun-warmed waters that produce coral reefs, still has an extensive supply of coral left over from the Silurian period 300 to 400 million years ago.

Geologists speculate the coral formed when warm waters of the Gulf Stream flowed through Mich. and surrounding areas. Vacationers can pick up handfuls of coral around De Tour and Alpena, and the Petosky- Traverse City area.

Reprint from The Mining Journal

NOTES FROM EXCHANGE BULLETINS:

From the "PSEPHITE" for Nov. published by the Rockcrafters of Burbank, Calif., it sounds as though they had a very interesting meeting in Nov. with the showing of Disney's film "Nature's Half Acre", plus the showing of colored slides and pictures of their first show. From all accounts it seems the show was a huge success. Guests were welcome, too bad we aren't closer to Burbank.

Here's an interesting excerpt from the Minn. Mineral Club's "Rock RUSTLER'S NEWS" for Nov.

NEW IRON MINERAL

All of you are quite familiar with the Iron Range Country here in Minnesota. In that part of the state it just seems that everything is red, even the people get a little red from time to time. Well, it seems that there was a man by the name of F.E. Rust who lived up on the range, and he was a farmer, raised sheep for a living. His sheep were grazed on this iron range and you know when it came to shearing time-----yep--top grade steel wool!

Mr. I.M.DeHandle

After reading the following in the Chicago Lapidary Club's "TEMPLATE" for Nov., I'm ready to turn in my diamond...how about the rest of you gals?

Titania is a rutile crystal of titanium dioxide, and is unique in that it is always manmade, for natural crystals have never been found. It has a hardness of only 7 or slightly more on the Mohs scale, but when properly cut and polished it will be several times as brilliant as any diamond with colors rivaling those found in the brightest rainbow.

From the St. Louis Mineral and Gem Society's "ROCKLORE" comes this amusing anecdote, and it's true too--



by Bud Wideman.

The Virginia City, Nevada, assay office was in an uproar over a strange mineral that could not be analyzed. Nothing like it had ever been seen before. It was the size and color of a coconut, but when chipped open, it revealed dazzling, ripply stripes of bright red, white and blue.

Finally, the assayer admitted his failure to the grizzled prospector, but persuaded the old fellow to show him where the mystery mineral came from. The "mine" was on the site of an old ghost town, right where the gambling hall burned down. The mysterious mineral was composed of racks of POKER CHIPS that had melted and fused together, then weathered for 50 years.

The Nov. "CONGLOMERATE" published by the Michigan Mineralogical Society informs us that the bookstore at HUDSON'S had a number of paper-bound books of direct interest to all...don't know about you, but I'm going to write and see if I can get a list and prices.

Here's something for you Lapidarist's....take special note Professor Bamford.

The common crepe rubber from old shoes make a good cleaner for sanders. Cut it into three inch squares for easy handling.

Julius Shade in the "ACHATES"

LAPIDARY NOTES

In the Mich. Gem News, Larry Oversmith warns all Lapidarists to watch what they breathe. Some dust from grinding and sanding taken into the lungs cannot be expelled or absorbed, causing Silicosis. Good advice is to always grind wet or wear an air-filter or mask.

From the Nov. issue "Pebbles" of the Everett Rock & Gem Club of Everett, Wash. comes this helpful way to polish thin pieces, such as Iris Agate. Dip the thin piece to another piece of agate or nodule, and sand carefully, keeping in contact with sander only a few seconds at a time. The Agate or Nodule will draw the heat away from the thin piece.

So. Bay Agatizer for Sept. has a solution for us for sanding our Onyx slabs. Use several pieces of plate-glass, one for 200 grit and one for 600 grit. Mix grit into paste and apply to plate-glass. Run slab in circular motion. It's a fast way to get rid of scratches and get a good surface for polishing.

Shop hints in Rockcrafters "Psephite" have a sound warning which all Lapidarists should heed, and that is to use the entire surface of the wheel. Use the edge as well as the center and double the life of your wheel.

"Rockhound News & Views" put out by the Verdugo Hills Gem & Mineral Society of Calif. suggests adding a little detergent to the polishing agents to help impregnate the agent into the felt or leather buff.

CRYSTALS BY THE MILLIONS!

You fanciers of Upper Mich. minerals and collecting areas should see the old dumps and stock-piles now. All covered with sparkling, white crystals of snow-dog-gone-it'. No more collecting until spring. We have had 38" of snowfall upon us and this has drifted to 4 and 5 feet in some areas. Move over Arizona--here we come. Anybody got any minerals to trade for a bushel of snow xls? They say no two snowflakes are alike.

The reason asbestos won't burn is because it has already burned. Asbestos is made up of fibrous xls which are completely oxidized, and there is nothing left to burn.

Reprint from the
Milwaukee Sentinel

CHRISTMAS PARTY

Our Christmas party proved to be a very enjoyable occasion for our club even though our meeting date conflicted with the Quaal Concert. Master of Ceremonies Bob Richards tactfully maneuvered us through a short and enlightening business meeting and then into the social portion of our party. A movie "Men, Metal and Machines" was screened, after which an exchange of gifts took place. Excellent mineral specimens swapped homes as did lovely home-made jewelry find its way to the possession of others.

Visiting gained momentum over many cups of coffee and sweets furnished by Mesdames Engstrom and Markert.

"A rolling stone may not gather much moss, but it sure gets a nice polish." "THE TEMPLATE"

LAPIDARY SHOP

The bulletin for the Ish. Public School's Adult Evening classes carried the following notice--"Lapidary Shop---would you like to cut and polish some of the specimens in your rock collection or make a brooch, pendant or other piece of personal jewelry with a stone you yourself have selected, shaped polished and mounted?"

Twelve interested rockhounds answered "YES". Classes have been held alternate Tuesday and Wed. evenings since Oct. 9th. Eight of the class are members of the Ish. Rock & Mineral Club, while the other four look suspiciously like future members. They seem to have that certain shine in their eyes, reflected, no doubt, from the rocks they are polishing.

And the teacher--Bud Bamford who has all the earmarks of the profession and knows all the tricks of the trade.

After the basic instructions the first evening, we were on our own, grinding stones and fingernails alike. It's surprising how many people can grind on one horizontal wheel at a time!

"BUD" circulates among the group, giving careful individual attention to all operations, sometimes too careful! To quote, "The proper procedure is to go from a coarse wheel to a finer one, step by step, to the polishing wheel, without skipping." "Are you sure you ground on the 400 wheel?" Caught on that one, weren't we Bob?"

Our friend Noah, not of the Ark, but of the Webster's, enlightens us this on the noun Lapidarist--"A connoisseur of gems and precious stones and the art of cutting them."

We do not claim to be "Connoisseurs" after ten (hard--not easy --but o so enjoyable) lessons, but there are at least twelve more "bragging rocks" in the vicinity of Ishpeming.

Elizabeth Rogers

INDIANS TAKE DIM VIEW OF URANIUM RUSH



URANIUM

The Indian's philosophy of white man's exploitations of natural resources was summerized the other day by Steve Buzwah, chief of the Indians from the Sagamuk Reserve near Sault Ste. Marie.

Asked how the uranium boom was affecting the Indians, Chief Buzwah replied according to the Sault Daily Star: Indian never get anything from white man. Two or three hundred years ago, white man come to North Shore of Lake Superior. He take all the fur and give Indian a few strings of beads. Then, a few years later, he cut down all big trees: build mills at Cutler, Spragge, Spanish and Blind River. Soon all big trees gone---he burn down mills and go away. Few years later he come back, build paper mill at Espanola, cut down all small trees. Nothing left on North Shore but rock. Now, by gosh, he come back for rock."

Reprint from the
Mining Journal

"A hobby is something you go

crazy over to keep from

going nuts."

rkr



Plans are going to be made shortly for another June field trip to the Copper Country.

Many of the members that participated in June 1956 have expressed their desire to go back over the country.

The Datolite found by Al Engstrom is reported to be a nice one.

The Ishpeming Rock & Mineral Club will place a display of minerals in the Chamber of Commerce building in Ish. shortly after the first of the year.

The National Convention of Mineralogical & Geological Soc. will take place in combination with the Rocky Mt. Federation on June 13-14-15-16 at Denver, Colo. The Midwest Field Trip Convention will take place at Plattville, Wis. See you there for some choice Lead-Zinc minerals.

Understand Professor Bud Bamford has had many requests for another session of Lapidary. "What's the good word, Bud?"

An apology is being made for the delay in getting this issue of the Jaspilite in the mail. Being a Railway Mail Clerk, I found myself caught in the Christmas rush with my Jaspilite down!

Corrections to the 1956 directory

An * was shown after the name of Edward Carlyon, Jr. and it should not appear there. Jr. in this case is a senior member.

The name Robert Schenk, Jr. should read Donald Schenk*.

Additions to the '56 directory

John Chapman*--317 Tobin St., Neg.
Bob Davis---P.O.Box 21 Silverton
Idaho

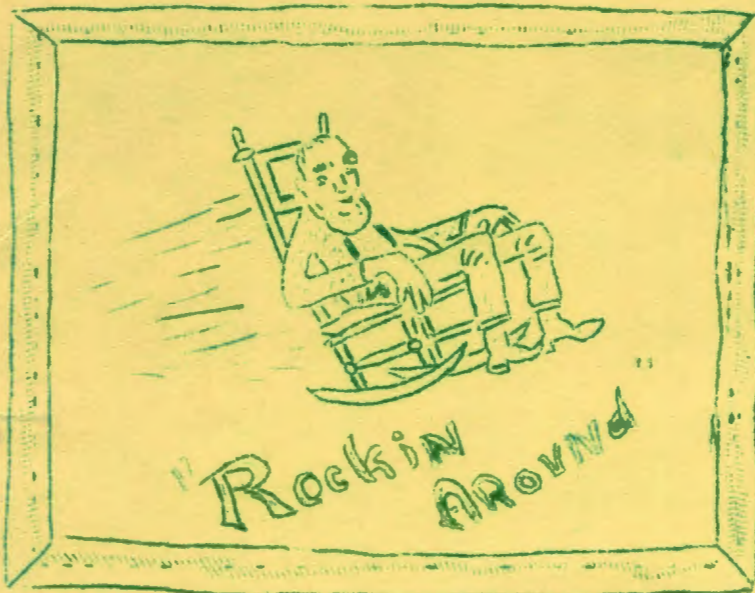
Anita Davis--" " " "
Mrs. Elmer Jarvi--116 E. Division
Ishpeming
Mildred Jenkins--Deer Lake Loc.
Ish.

Jarl Kivela--P.O.Box 228 Neg.
Charles Krebs--P.O.Box 432 Saginaw
Mich.

Joe Thomas*--313 E. Main St. Neg.
Mrs. Wm. Trebilcock--627 N. 3rd St.
Ishpeming
Jim Urquhart*--213 W. Ridge St Ish.

Chapman, Thomas and Urquhart are Junior members.

We now have over 50 members in our growing organization and we welcome all these new members and sincerely hope that you shall enjoy your hobby among a group of people that you shall get to know and like. Your ideas shall be welcome and contributions to this column or news items for the Jaspilite will be greatly appreciated.



A note from VIVIANNE DOSSE, Editor-in-chief of the Bulletin Ed. Assoc., reveals to us the fact that 6 out of 33 members of Arrowhead Mineralogical Society are former Michiganders. She is planning on a trip to Mich. next summer. You are welcome, and please look us up when you arrive.

Hats off to member RALPH SHEEHAN who was recently named as Civilian Defence Director of Michigan by Hon. Mennen G. Williams. This will mean that Ralph will have to move to Lansing and we won't have amible Ralph in the Chamber of Commerce office any more. Our wishes for your success is hereby extended to you. We will miss you here.

MRS. ABBY ROBERTS and BERNIE RICHARDS attended the National Gem & Mineral Show in Denver, Col. in June.

ART & THELMA POWELL of Findlay, Ohio visited friends in Ish. and Hancock before heading for the Denver show.

HATS OFF to 4H Jaspilite member, MISS RUTH JARVI. In taking her exam on 4H accomplishments in mineral studies, she received a mark of 98%. This is remarkable when one is required to name all of the characteristics of 10 different minerals. Ruth listed the specific gravities to 3 decimal places. Neither of her instructors could do as well.

PLEASE NOTE MISS HANEY! Agates and Petrified wood are being found in the gravel pits at Winona, Minn. That's not too far from your home in Sparta.

BOB AND LYDIA PAPE were visitors in Ish. recently. They were returning from a two months tour of the West. Bob's adventures sounded real interesting. He has promised an article for the Sept. Jaspilite.

The Club has been working in cooperation with the Ish. Chamber of Commerce and has designed cards of minerals which will be sold by the Chamber at it's Tourist Information booth on Highway US 41. Each card contains 6 different minerals and 3 different cards are available. Price of cards are 75¢ each or 3 for \$2.00. The latter providing an assortment of 18 different Marquette Co. minerals. Interesting facts are stated on the reverse side of the cards.

We hope that the Flint Mineral Club held an enjoyable and profitable field trip in the U.P. Let us know when Ish. & Neg. are on your agenda.

Considerable work on this Jaspilite was done by our President, for which your Editors are very thankful. Our thanks also to contributors MAMIE JARVI, BERNIE DOOLEY, BOB SCHENK and BOB DAVIS.

Sorry we are late with this issue. Editors went vacationing.

Jarl Kivela has an interesting field trip planned for the club for this coming spring. Come to the meeting and hear Jarl tell you where this exciting trip will be.

Our next meeting will take place on Thursday, January 31, 1957. Meeting will be called to order at 7 pm in the Ski Hall of Fame. The program committee for this meeting is Carlyon, Hutander and Roberts.

Field trips for the summer months will be planned and Bernie Dooley has promised to come up with some plans there.

Anyone wishing to be treated to an exciting time in this hobby should view the world of gems and minerals through Bob Richards newly acquired Microscope. Bob has some mighty fine Micro-mounts, just waiting to be viewed.

The Dana Rogers and Herman Hendrickson were really thrilled with their finds of Millerite under the expert guidance of Onnie Hutander. Onnie found two Quartz xls with Millerite inclusions and he immediately presented them to his guests. The last report indicates they were very much appreciated.



1957 dues
now payable to
Treas.
BUD BAMFORD
\$1.00----Adults
.50----Junior

All club bulletins that have been received during the past month have been of high quality and with lovely Christmas Greetings. We hope that your holidays were JOYOUS and we certainly wish EVERYONE-----A HAPPY NEW YEAR!

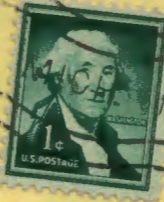
Among the many visitors at the Champ Lemin home during the past summer were: Mr. & Mrs. Leo W. Yanasak of Des Moines, Iowa; Mr. & Mrs. Fred Kessler of Redding Calif.; Miss Glenda Root of Flint Mich., and Mr. & Mrs. K.P. Carr of Beacon, New York.

With apologies to Artist SIVIC and True Magazine



"I never could tell the difference between a Stalactite and Stalagmite!"

Charles R. Markert
107 W. Ridge St
ISHPEMING, MICH



NG M.

REMOVE

R. K. Richards
522 Iron St.
Negaunee Mich